

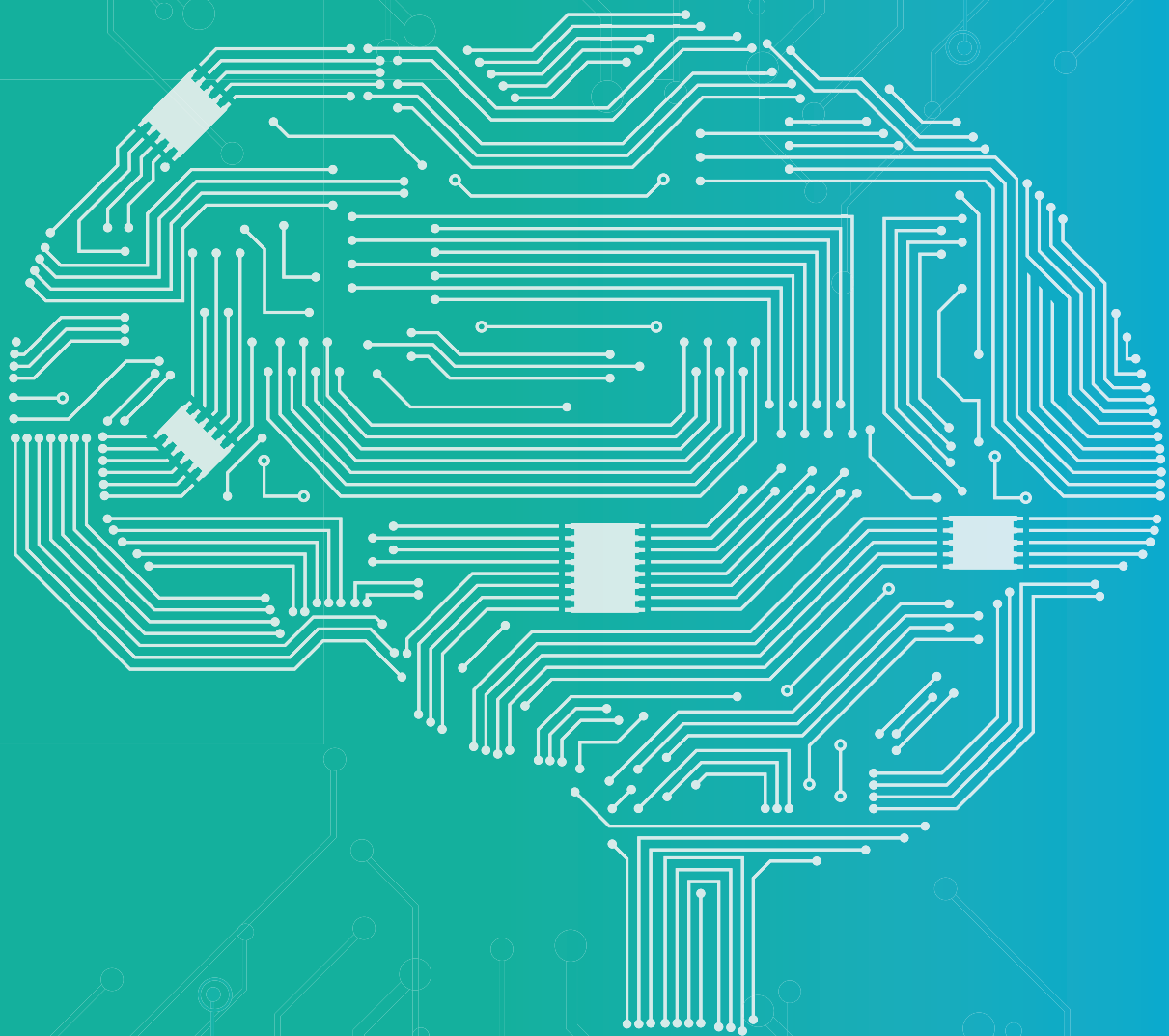


SM ELECTRONIC TECHNOLOGIES PVT LTD
An ISO 9001 : 2015 Certified Company

DEFINING
ELECTRONIC
DISTRIBUTION TO NURTURE
BUSINESSES

WWW.SMETGROUP.COM

BENGALURU | SINGAPORE | NEW DELHI | PUNE | HYDERABAD | CHENNAI | MUMBAI | AHMEDABAD



OVERVIEW

ABOUT US

Innovation Is A Change That Unlocks Value.

We understand that innovation lies at the heart of our customers. By the time you have the idea and move it on paper, we support you to make it a product with all components, ready at your doorstep. Started out in 1990, we are a family of enthusiastic team members and are a leading distributor in electronic industry. We are now a joint venture company with Satori Electric, Japan who is a global distributor, listed in Japan (TSE Code JP3322300009).



Headquartered in Bangalore and present at 7 locations, we cater to customers in India and ASEAN.

We understand customer and market needs and bring to them new technologies and solutions from leading electronic manufacturers across the world.



OUR STRUCTURE

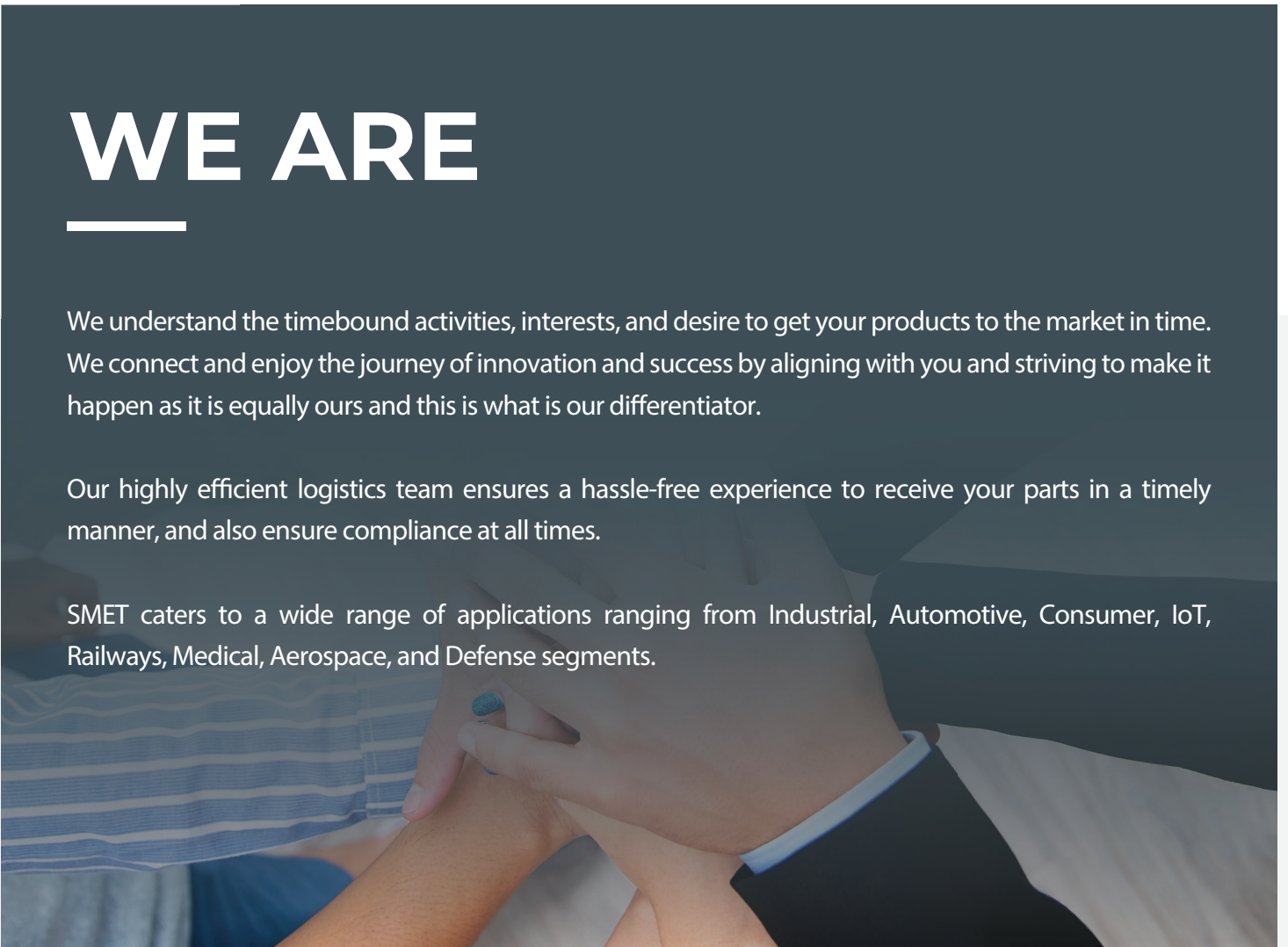
We are a well-structured organization, leading with sales and marketing teams that are powered by very experienced Field Application Engineers (FAE). Our excellent customer support ensures we are there for our suppliers and customers at all times. As a value-added distributor, we make it all happen with convenient distribution solutions to our customers and suppliers which enables us to stay connected and make you confident of entering the market faster. Our highly efficient logistics team ensures a hassle-free experience to receive your parts in a timely manner, and also ensure compliance at all times. SMET caters to a wide range of applications ranging from Industrial, Automotive, Consumer, IoT, Railways, Medical, Aerospace, and Defense segments.

WE ARE

We understand the timebound activities, interests, and desire to get your products to the market in time. We connect and enjoy the journey of innovation and success by aligning with you and striving to make it happen as it is equally ours and this is what is our differentiator.

Our highly efficient logistics team ensures a hassle-free experience to receive your parts in a timely manner, and also ensure compliance at all times.

SMET caters to a wide range of applications ranging from Industrial, Automotive, Consumer, IoT, Railways, Medical, Aerospace, and Defense segments.



OUR SUPPLIERS & PRODUCTS

SUPPLIERS	PRODUCTS																																							
	Amplifiers	Audio Components	Batteries	Capacitors	Circuit Protection	Timing devices	Communication	Connectors	Counters and Timers (Logic)	Data Conversion	Embedded boards and Devp. Sys	Discretes	Displays	Drivers and Interfaces	Electromechanical, Relays, Switches	Filters	Kits and Tools	LEDs and LED Lighting	Magnetics	Memory	Microcontrollers and Processors	Motors	Optoelectronics	Oscillators and Crystals	Power Management	Power Supplies	Fan	Resistors	RF and Microwave	Sensors	Transceivers	Transformers	Wireless & RF	PCB	Contactors	Radar Modules				
RENEASAS	★	★			★	★	★			★	★			★			★			★	★		★	★	★	★			★	★	★		★							
TIANMA													★				★																							
ROHM	★	★		★	★					★	★	★		★				★		★	★		★		★	★		★			★	★								
QUECTEL							★			★							★																	★						
FUJITSU							★								★					★																★				
EVE ENERGY			★																																					
NICHICON			★																													★								
QUALCOMM											★			★							★											★		★						
MACRONIX																				★																				
PANASONIC			★	★	★			★							★							★										★				★				
YAGEO				★	★							★				★													★		★									
MERCURY SYSTEMS	★																													★										
SENSATA															★																					★				
HONEYWELL															★																	★								
COSEL																	★									★														
DIOTEC					★							★															★													
IGNION																														★				★						
TDK		★	★	★	★										★	★			★						★									★	★	★	★			
DEKI				★																																				
QORVO	★										★					★				★				★						★										
SG MICRO	★	★				★			★	★	★			★											★															
MTRON PTI	★					★										★								★		★														
AMPLITECH	★																													★										
AMCOM	★																																							
MURATA		★	★	★	★	★	★									★	★							★		★					★	★		★						
UNION SEMICONDUCTORS	★				★		★					★		★												★						★								

PRISMATIC
MINEBEAMITSUMI
SCC
TAIWAN SEMICONDUCTOR
MINEW
BETTERFUSE
CHONGQING CAS
VERGIGA SEMICONDUCTOR
ABLIC/SII
HIROSE
ATTEND
AOS
CT MICRO
FUTABA
KODENSHI
CHUROD
MITSUBISHI ELECTRIC
SUMIDA
MCV MICROWAVE
BOSCH
COIL MASTER
TAEJIN
OMNI PRESENSE
AIMTEC
DEGSON
IKSEMICON
JADAK
RAYTAC
TRIMBLE
OMNIVISION
MELEXIS
SUNON
DEXERIALS

ACTIVE COMPONENTS



- Headquartered in Tokyo, JAPAN | Revenue: 8B USD.
- Recent Mergers: ISL, IDT, Dialog, Celeno.
- MCU – 8/16/32Bit – RL78, RX, RA, Series (W/W #1 MCU).
- MPU-32/64 Bit -RZ, with Ai (Linux and Android).
- Analog & Power: PMIC, AC-DC, DC-DC, USB-Power, BMS, Others.
- Connectivity: BLE, Wi-Fi, NB-IoT, RF (Wi-Sun).
- Timing and RF Parts.

RENESAS.COM



- Headquartered in Kyoto, JAPAN | Revenue: 4B USD.
- Mergers – Kionix, Lapis Semiconductors.
- Power Management, Battery Management, Analog & Power – LDO, DC/DC, Ac/Dc. ADC & Isolators.
- Sensors, Interface & Can IC.
- Sic MOSFET, Sic IGBT Modules, Sic Diodes.
- Automotive Lighting Solutions.

ROHM.COM



- Headquartered in Reutlingen, GERMANY | Revenue: 1.92B USD.
- AEC-Q100 & ISO26262 ASIL D Qualified MEMS Sensors.
- Own Wafer & Fab Production.
- Inertial Measurement Units, Pressure Sensors, Semiconductor Mobility Sensors.
- CAN Transceivers, Pyro-fuse Drivers, SiC Mosfets.

BOSCH-SEMICONDUCTORS.COM



- Headquartered in Shanghai, CHINA | Revenue: 2B USD.
- Founded in 2010, 6 R&D Centres Globally, Monthly Production Capacity Over 22 Mpcs.
- Cellular Modules: 5G / LTE/ LTE-A / LPWA / 3G / 2G / Automotive & Smart Modules.
- GNSS Modules: IoT, Automotive, Dead Reckoning, High Precision & Timing.
- Wi-Fi & Bluetooth Modules: Wi-Fi 4, 5, 6, 6E, Automotive.
- Antenna: Various types of Antennas Matched To 5G/4G/3G/2G/LPWA/GNSS/Wi-Fi&BT.
- Applications: Telematics & Transport, Energy, Payment, Safety, Smart Cities, Gateways, Industry, Life & Health Care, Agriculture & Environment.

QUECTEL.COM



- Headquartered in Greensboro, North Carolina, USA Revenue: 4.8B USD.
- Recent Mergers: Active Semi, TriQuint Semiconductor, RF Micro Devices.
- Motor Control – FOC with GUI Tool.
- Telecom: SWITCHES, Optical, Passives, Discrete Transistors, Filters & Duplexers, Frequency Converters & Sources, Amplifiers, Control Products.
- Low Power IoT: Zigbee (TM), Thread, BLE, UWB, Multi-Stack, Multi-Channel Communication Controller.

QORVO.COM



- Qualcomm are the market leader in Auto Connectivity offering most comprehensive roadmap & portfolio based on their decade of research & development.
- Qualcomm has been ranked #1 for their telematics & Bluetooth offering.
- Qualcomm's portfolio includes products for 4G & 5G, processors/SoC, Wi-Fi/Bluetooth, GNSS, Cellular V2X, RF-Front end systems & IoT connectivity.
- They offer a full range of purpose-built, pre-packaged software, hardware, and tools that help you get your invention to market faster.

QUALCOMM.COM



- Headquartered in Dallas, TEXAS | Revenue: 850M USD.
- We Represent AST Division.
- Key Products Include: Sensors / Switches / Controls / Scan engines.
- Covering all Industrial / Defence & Aerospace / Medical / Automotive – Switches /Sensors /Controls.
- Scan Engines Offerings Both In Software And Hardware Versions Makes All Kind Of Scanning Simple.
- Wide Variety Of Current Sensors & Latch/switches Offerings Catering To All EV Space.
- Wide Variety Of Pressure Sensors For Industrial And Automotive And Defence Segments.

HONEYWELL.COM/IN/EN/HAIL



- Headquartered in Kyoto, JAPAN.
- Global Leader In Design, Manufacture & Supply Of Advanced Electronic Materials Such As Wi-Fi, BLE, Wi-Fi+BLE Combo Modules, Inductors, ESD Suppression Filters / ESD Protection Devices, High Voltage Resistors, Buzzers, RFIDs Etc.

MURATA.COM



- Headquartered in Beijing, CHINA | Revenue: 500M USD.
- Amplifier: ADC, Voltage Reference, Analog Switch, LDO, LED Driver, OVP IC, Li-Ion Battery Charger, Motor Driver, Comparator, DAC, Audio/Video Driver, Logic Switch, μ P Supervisory Circuit, Gate Driver.

SG-MICRO.COM



- Headquartered in Barcelona, SPAIN.
- Founded in 2015.
- Ignion Leads The World In A New Generation Of Chip Antennas Called Antenna Boosters.
- NN Chip Antennas Are SMD, Miniature And Multiband.
- Chip Antennas for 5G/4G/3G/2G/Wi-Fi/BLE/LoRa/NB-IoT/6E, Sigfox, Zigbee, GPS.
- Applications: Telematics & Transport, Energy, Payment, Safety, Smart Cities, Gateways, Industry, Life & Health Care, Agriculture & Environment.

IGNION.IO



- Headquartered in Taiwan | Revenue: 3.88B USD.
- NOR FLASH: Serial, Parallel, Octabus, Ultra Low VCC, Supports from 512KB – 2GB.
- NAND FLASH: SLC NAND Flash, Serial, Supports From 1GB to 8GB.
- eMMC: Armor Flash, Lybra, Multichip.
- ROM: XtraROM.
- Solution: Automotive, Industrial, Communications, wearable devices.

MACRONIX.COM



- Headquartered in Taiwan.
- Bluetooth Specification BT4.2, BT5.1
- FCC (USA), CE (EU), IC (Canada), TELEC (Japan), KC (Korea), SRRC (China), RCM (ANZ), WPC (India) Certified Modules.
- Both SDK & AT-Command Based Modules.
- Long - Range Support, BLE AoA & AoD Support .
- Multi - Protocol - Bluetooth, BLE Mesh, Thread, Zigbee.

RAYTAC.COM



- Headquartered in Attleboro, MA, USA. | 100 Year Old Company.
- Recent Acquisitions: Gigavac, Crydom, Airpax, Newall, Sendyne Corp, SmartWitness, Spear Power Systems.
- Relays, Contactors, Fuses, Switches, Pressure Sensors, TPMS, Position Sensors & Encoders, Circuit Breakers, Motor Protectors.
- Medical, Defence , Automation & Test Equipment, Railways, Network And Communication, Automotive, Process Industries, Industrial.

SENSATA.COM



- Headquartered in Toyama, JAPAN.
- AC-DC Power supplies, DC-DC Converters & EMI/EMC Filters.
- Enclosed Type, Open Frame type, DIN Rail Type, Configurable Type, PCB Mount type, POL type, Bus Converter/Power Module type,
- Single Phase EMI Filters, Three Phase EMI Filters Medical, Defence, Automation and Test Equipment, Railways, Network & Communication, Automotive, Process Industries, Industrial.

ABLC.COM/ SII.CO.JP



- Headquater in Seongam-ro Mapo-gu, SEOUL
- Iksemi is a prominent fabless semiconductor company Started in 2000
- Power train, Motor Drive, PWM controller, LED Driver, Communication, LDO, OpAmp, and Ics.

IKSEMI.COM



- Headquartered in Reutlingen, GERMANY | Revenue: 1.5B USD.
- Industrial, IoT & Consumer MEMS Sensors.
- Own Wafer & Fab Production.
- Miniature MEMS Sensor Technologies.
- Sensors – Motion, Environmental, Smart & Optical Microsystems.

BOSCH-SENORTEC.COM



- Headquartered in Belgium.
- They Cater Anything To Do With Sense And Drive: Magnetic / Inductive Position Sensor / Current Sensor / Latch And Switch / Embedded Drivers / Fan Drives.
- Key Market: Automotive 2W / 4W, Industrial, Consumers.
- They Cater Anything To Do With Sense & Light: Pressure Sensor Embedded Lighting / Temperature Sensor / Optical Sensor /Sensor Interface.
- Key Market: Automotive 2W /4W, Industrial, Medical.

MELEXIS.COM



- Headquartered in Korea.
- Voltage Reference, Voltage Regulator, DC-DC, Converter and Controller, Operational Amplifiers, Comparators, Interface, Logic IC, TVS Diode, Timer, Audio Amplifier.

HTCKOREA.CO.KR



- Headquartered in CHINA.
- Recent Acquisitions: WellSemi.
- CMOS Sensors, Camera Modules.
- Application Focused Are Automotive , Medical , Security.
- Analogue and Power : LDO, DC-DC , MOSFET , ESD.
- Application Focused Are Consumer , Metering , Automotive .
- Easy Time To Market For Anyone In Endoscope Market As They Have Complete Solution End to End.
- Best In Class 1MP to 64MP CMOS Sensors.

OVT.COM

PASSIVE COMPONENTS



- Headquartered in Tokyo, JAPAN | Revenue: 13.56B USD.
- Chip capacitors upto 3000V & High Capacitance Value Upto 100uF.
- Chip Bead With Size 1005 (0402) With Broad Range Of Frequency.
- Multilayer Chip Varistors With Case Size 2012-0603.
- Small Size Inductors, EMC component, Piezo Electric Products & Transformers.

[TDK.COM.SG](https://www.tdk.com.sg)



- Headquartered in New Taipei City, TAIWAN
- Recent Mergers: KEMET
- Passive Components: resistors, capacitors, inductors, Pulse transformers, relays
- Wireless Components: Antenna, LTCC Filter, X2Y
- Circuit Protection: TVS, MOV, ESD, GDT, PPTC, SPG, TSS, NTC

[YAGEO.COM](https://www.yageo.com)



Bettler

- Headquartered in Guangdong, CHINA.
- Technical Collaboration with EDLER Germany
- Fuse and Circuit Protection Devices Like Over Current Fuses (SMD Cartridge, PPTC, Box fuse), Over temperature fuses, Over Voltage Fuses.
- Fuse Accessories (Fuse Holders, Fuse Clips).
- PV Fuses, EV Fuses, Circuit Breakers & Surge Protection Devices.
- Consumer Electronics, Electrical Home Appliances, Transportation Industries, Lighting Equipment, Power Supplies.

[BETTERFUSE.COM](https://www.betterfuse.com)



- Headquartered in Oberzell, GERMANY
- Global leader in design and manufacture of coil related components and modules
- Core Products: Power inductors, RF inductors, power transformers, Antennas, EMC coils etc

[SUMIDA.COM](https://www.sumida.com)



ideas for life

- Headquartered in Kadoma, Osaka, JAPAN.
- Passive Components, Connecting Components, Relays, Connectors, Switches, Sensors, Batteries.
- Resistors, Capacitors, Inductors, Fuses and EMC Components.
- Focussed Segments: Automotive, Consumer, Industrial.

[NA.INDUSTRIAL.PANASONIC.COM](https://na.industrial.panasonic.com)



- Headquartered in Taipei city, TAIWAN.
- Anti-surge resistor, Precision Resistors, Stability Resistors, High Voltage Resistors, Current Sense Resistor, Automotive Grade Resistor, High Power Resistor, Circuit Protections Resistor, Jumper Resistor, High Frequency Terminator Resistor (HFT) and Carbon Film MELF Resistor-CM.
- Applications: Power Supply, Telecom, Meter, Medical, Automotive And Lighting.

[FIRSTOHM.COM.TN](https://www.firstohm.com.tn)



- Headquartered in Kyoto, JAPAN.
- Sensors, Semiconductors, Photo IC, LED, Image Sensors.
- Applications: Office Automation, Robot Solution, Mobility and Lighting.
- MOSFET, Transistors and SB Diodes.

[KODENSHI.CO.JP](https://www.kodenshi.co.jp)



- Headquartered in San Jose, CA.
- They Manufacture Short Range Radar (SRR) Modules for Traffic Monitoring / Drones / Robotics / IoT Systems.
- This Sensors Provide Motion Detection, Speed, Direction, And Range Information Allowing Your System To "See" The World Around It.

[OMNIPRESENSE.COM](https://www.omnipresense.com)



- Headquartered in Kyoto, JAPAN | Revenue: 2B USD.
- Specialized In All Kind Of Aluminium Electrolytic Capacitors (Chip type, Miniature type, Snap in Type, Screw terminal)/ Polymer Capacitors/ Film capacitors.
- Major Focused Segments : Automotive (CDI, Regulator Rectifier, Cluster, ECUs, EV), Power Supply (UPS Inverters, Motor Control, AC/ DC Drives), Consumer (Washing Machine, Aircon, Refrigerators Etc) and Lighting.

[NICHICON.CO.JP](https://www.nichicon.co.jp)



- Headquartered in Jigani, BANGALORE.
- Ferrite Core Based Switching Power Transformers.
- Current Sensors (Hall Based Current Sensors).
- Common Mode Differential Mode Input Filter Chokes In Various Geometries And Rod/drum Core-based DC Output Chokes.
- The Lamination Core Range Includes Step Down Transformers For Linear Power Supplies, And Reactors / Inductors For Inrush Current Limiting.
- Power Factor Correction Systems And Other Electrical Applications.

[PRISMATIC.CO.IN](https://www.prismatic.co.in)



- Headquartered in CHINA | Revenue: 1.6B USD.
- Leader in Global Relay Industry.
- Power Relays, Latching Relays, Signal Relays, Industrial Relays, Automotive Relays And Modules, Industrial Connectors, Etc.
- Focused Segments: Automotive, EV, Appliances, Industrial, Smart Grid Etc.

[HONGFA.COM](https://www.hongfa.com)



- Founded in TAOY UAN, Taiwan at 1995.
- Manufacturer & Service provider bases in Taiwan (Headquarters)
- Coilmaster Electronics so far have three factories at China – Guangdong (R&D, Logistic Dept), Hubei (IATF16949) & Shandong
- Key focus on Design, Development & Marketing of Multiple Magnetics & Passive components.

[COILMASTER.COM.TW](https://www.coilmaster.com.tw)

- Established in 1951, Headquartered in Tokya, Japan
Revenue: 8.65 Billion USD
- MinebeaMitsumi is Global Top 2 in Automotive for DC Motor.
- Support Motors size range of the outside diameter round type from 24mm to 35.7mm. Also support new square type (S Series) to realize small space, high torque and light weight.
(Size: 8mm to 30mm)
- MinebeaMitsumi support DC Motor customer based on rich experience for Automotive application.
- Provides Semi-customization support for coil winding design to optimize spec & cost for your requirement.
- Support DC Brushed Motor as actuator for Electrical Steering Column Lock (ESCL), Seat Lock, Electrical Flush Door Handle, Electrical Door Latch , Electrical Tailgate Latch etc.

- Chongqing CAS Supercap Technology Co.Ltd (CAS SCAP) focuses on development, production and sales of Super-Capacitors, advanced high-power-energy-storage devices, as well as providing energy storage technology.
- CAS SCAP is the only company producing 3.2V single-voltage electric double-layer supercapacitors (ELDC).
- Chongqing CAS Supercap Technology Co., Ltd., founded in July 2018, located in Chongqing, China.

BATTERY

- Headquartered in Guangdong, CHINA | Revenue: 2.32B USD.
- No.1 In Sales And Exports Of Primary Lithium Batteries Ranked First For 6 Consecutive Years.
- EVE is a Global Lithium Battery Company Which Possesses Core Technologies & Solutions For Consumers, Electric Vehicles, Power, IoT & Renewable Applications.
- They are High-Quality Lithium Battery Platform Company That Can Provide Comprehensive Solution.
- Their Products Are Widely Used In The IoT, EV & ESS.
- EVE Has Advanced Manufacturing System Of Consumer Battery & Power Battery In The Industry, And Creates The "World Famous Brand" Of Lithium Battery Manufacturing.

CONSUMER BATTERY:

- Primary Lithium Battery - Li-SOCl₂ Batteries , Li-MnO₂ Batteries, Battery Capacitor SPC, ER+SPC Solution, Long-Life High-Power Li-ion Battery PLM.
- Consumer Li-ion Battery - Pouch Cell, Bean Cell.
- Cylindrical Cell.

POWER BATTERY:

- Prismatic LFP Cell.
- Prismatic NCM Cell .
- Pouch NCM Cell.
- EV - Cylindrical Cell.
- Module.
- BMS.
- Battery System Development.

POWER SUPPLY



- Headquartered in Montreal, Canada.
- Modular Isolated DC-DC Switching Power Converters, AC-DC Power Supplies, Switching Regulators, EMC Filters & LED Drivers. With Offices In Europe And Asia, Aimtec's Standard Products Include DC-DC Converters Upto 250W, AC-DC Converters Up To 550W and LED Drivers Reaching 250W.
- Medical, Defence , Automation and Test Equipment, Railways, Network and Communication, Automotive, Process Industries, Industrial.

AIMTEC.COM



- Headquartered in Toyama, JAPAN.
- AC-DC Power Supplies, DC-DC Converters & EMI/EMC Filters.
- Enclosed Type, Open Frame type, DIN Rail Type, Configurable Type, PCB Mount Type, POLA Type, Bus Converter/Power Module Type, Single Phase EMI Filters, Three Phase EMI Filters.
- Medical, Defence, Automation and Test Equipment, Railways, Network and communication, Automotive, Process Industries, Industrial.

COSELASIA.COM

DISCRETE COMPONENT



- Headquartered in Sunnyvale California, US | Revenue: 1B USD.
- Products: P Channel MOSFETS (8V-60V), N Channel MOSFETS, IGBT, IPM, Power Ics - DC/DC Buck, Switches, eFuse, TVS Diodes, (SiC/Gan) MOSFETS – SiC Diode, Sic MOSFET, Gallium Nitride MOSFETS.

WWW.AOSMD.COM



- Headquartered in Heitersheim, GERMANY.
- Specialist for Semiconductor Solutions.
- Producing Discrete Semiconductors Is Our Passion.
- Standard And Customized, With High Availability And Fast Worldwide Delivery.
- Products: Rectifiers, Diodes (Schottky, Zener, Small signal Diodes) TVS Diodes, Load Dump Protection TVS Diodes, ESD Diodes, Transistors, MOSFETS, Regulators (LDO, Shunt regulator, Current limiting Diode).

DIOTEC.COM



- Headquartered in Shanghai.
- Power Management: OCP & OVP, Power Switch.
- Interface: RS485, RS422, RS232, Level Shifter, CAN Bus Transceiver, I²C and SPI Interface, LVDS Transceiver.
- Optical Device: Laser Diode, PIN Photo Detector, Avalanche Photo Diode.
- Power Supply , Analog Switch Multiplexer, Discrete Device.

UNION-IC.COM



- Headquartered in Shenzhen, CHINA
- Focuses on the development, sales, and application of power devices and integrated circuit products..
- The company specializes in power MOSFET and IGBT products.
- It was formerly known as Vanguard Semiconductor.

VGSEMI.COM



- Headquartered in Tipie, TAIWAN.
- 40 Years of Technology.
- Manufacturing And Global Supply Chain Expertise Company & Core Competencies In Power Rectifiers And Discrete Products.
- Products: Rectifiers, Diodes (Schottky, Zener, Small Signal Diodes) TVS Diodes, Load Dump Protection TVS Diodes, ESD Diodes, Transistors.
- Automotive Lighting Solutions.

TAIWANSEMI.COM

Dexerials

- Headquartered in Tochigi, JAPAN.
- Products: SCP Fuse for BMS.
- Protection Devices SCP For - Li-ion Rechargeable Battery.

DEXERIALS.JP/EN



- Headquartered in Newtaipei City, TAIWAN.
- Major Components: Opto Couplers, Transistors, IGBT Gate Driver, IR emitter, IR Detector.
- Focussed Segments: SMPS, Consumer / Metering, IOT.

CT-MICRO.COM



- Headquartered in Tokyo, JAPAN.
- Mitsubishi Electric has been at the forefront of Japan's technical ingenuity and product innovation.
- From its first hit product—an electric fan for consumer use Mitsubishi Electric has continued to create a long list of "firsts" and groundbreaking new technologies that have shaped its business fields all around the world.
- We are authorized distributor for Power Semiconductor & Devices Group (IGBT Modules, IPM's & Power Modules).

MITSUBISHIELECTRIC.COM

RF AND MICROWAVE

mercury

- Headquartered in Andover, Massachusetts, USA.
- Recent Acquisitions: Atlanta Microwave.
- Applications: Electronic Warfare, Radar, Communication Equipment, Artificial Intelligence.
- RF & Microwave Components, Rugged Display Systems.
- DRFMS, TUNERS, Tuneable Filters, Solid State Power Amplifiers, VPX Systems.

MRCY.COM



- Headquartered in New York, USA.
- Recent Acquisitions: Spectrum Semiconductor Materials, MMIC Design Centre.
- Amplifiers, Surface Mount RF Components, Passive RF Components.
- Products for Defence and 5G.
- Stronger Portfolio For Low Noise Amplifiers.

AMPLITECHINC.COM



- Headquartered in Orlando, Florida, USA.
- MtronPTI is a publicly traded company (NYSE:MPTI).
- Offers RF, microwave, and millimeter wave filters; cavity, crystal, ceramic, lumped element (LC), and switched filters.
- High performance and high-frequency OCXOs, integrated PLL OCXOs, TCXOs, VCXOs, low jitter, and harsh environment oscillators and clocks.
- Crystal resonators, Integrated Microwave Assemblies (IMA), and state-of-the-art solid-state power amplifier products.

MTRONPTI.COM

QORVO

- Headquartered in Greensboro, North Carolina, USA. Revenue 4B USD.
- Recent Mergers: Active Semi, TriQuint Semiconductor, RF Micro Devices.
- Low Power IoT: Zigbee (TM), Thread, BLE, UWB, Multi-Stack, Multi-Channel Communication Controller.
- Telecom - Switches, Amplifiers, Frequency Convertors and Sources, Control Products.

QORVO.COM



- Headquartered in Gaithersburg, Maryland, USA.
- Applications: Aerospace and Defence, Telecom.
- Low Noise Amplifiers.
- SPDT Switches.
- MMIC GaN Power Amplifiers.
- Compact Solid State Power Amplifiers.

AMCOMUSA.COM



- Headquartered in San Diego, California, USA.
- MCV Microwave Filters Cover UHF/VHF, 4G LTE, DVB-T, CATV, GPS L1/L2/L5, ISM915 MHz/2.4 GHz/5.8 GHz, 802.11
- Filters for SATCOM and MM - Wave For Cellular DAS.
- Oscillators For Industrial And Military Applications.
- GPS Patch Antennas.
- RF Cables, Connectors And Adaptors.

MCV-MICROWAVE.COM

DISPLAY

TIANMA

- Headquartered in ShenZhen, CHINA | Revenue: 4.7B USD.
- Global No 2 Rank in Display Market.
- Consumer Market: LTPS & Wearable.
- Customised LCD: TN, STN, ASTN, FSTN, DASTN, EBN.
- Customised TFT: 1" to 15".
- Marine & Avionics.
- Target Market: Instrument Cluster, HMI, POS, ATM, Medical, Avionics, Energy Meter, Infotainment.
- Technology: Wide Viewing Angle, High Resolution, In Cell / On Cell, Free Form Display, Reflective, Low Power, Transparent, Anti Vibration, Super Low Temperature, AMOLED, FLEXIBLE AMOLED.

TIANMA.COM

ELECTRO MECHANICAL & CONNECTORS

Churod Electronics

- Headquartered in Dongguan, CHINA.
- Relays for Power, Signal, Automotive, Solar, Industrial and White Goods Applications.
- High Voltage DC Contactors For EV And Solar Applications.
- Latching Relays & Customization For Smart Metering Applications.

CHUROD.COM

HIROSE ELECTRIC CO., LTD.

- Headquartered in Osaki, JAPAN | Revenue : Approx 104M USD.
- Founded in 1937.
- Hirose Electric Has Established Its Position In Growing Trust & Recognition As A Specialized Manufacturer Of Connectors.
- Wire-to-Board, Board-to-Board, FPC/FFC, Card Sockets, RJ45, Coaxial, Optical, High Speed, Automotive & Waterproof Connectors.
- Applications: Smart Appliances, Wearables, Powertrain, Infotainment, Automotive Lighting, Smart Grid, Medical, Telecommunications, EV Charging Stations.

HIROSE.COM

ATTEND

Connect To Your Success

- Headquartered in New Taipei, TAIWAN.
- Founded in 2002.
- ATTEND Technology, As A Professional Connectivity Solution Provider, Specializes In Connectors And Cable Products.
- Circular, RJ45, USB, HDMI, Mini PCIe Express, M.2 (NGFF), Pogo Pin, MXM, SO DIMM, I/O Connectors and Cable Assembly.
- Applications: Networking, Industrial, Consumer, Medical, Smart Grid, Telematics.

ATTEND.COM.TW

FUJITSU

- Headquartered in Shinagawa-ku, Tokyo, JAPAN.
- Relays, Connectors, Keyboards, Touch Panels, Pointing Devices, Thermal Printers, Wireless Modules, Server Console Switches, Unit Products, Etc.

FUJITSU.COM

DEGSON®

- Founded in 1990, DEGSON is a global solution provider of electrical, electronic, and industrial connectors.
- These products and provide professional services globally in the industry sectors likely industrial automation, instrument, electric power, and railways.
- Degson products are widely recognized in China, the USA, Germany, the UK, Italy, Spain, Turkey, Japan, South Korea, Singapore, etc

DEGSON.COM

SUNON®

- Headquartered in Kaohsiung, TAIWAN | Revenue: 458 million.
- Top 3 global Fan manufacturer.
- They owns and operates 4 world-class manufacturing facilities in China, Taiwan & Philippines.
- Sunon support the Smallest Fan 8 mm till HVLS Fan up to 7,300 mm.
- Provide Total thermal solutions for AC/DC Fan, DC Blower, Air Cooling and Liquid-Cooling Module.
- Sunon product offering is utilized by all major End Markets including Telecom/ Server, Automotive, NB, Home Applications , Industrial& Energy.

SUNON.COM

PCB

SCC

深南电路股份有限公司
SHENNAN CIRCUITS CO., LTD.

- Headquartered in Shenzhen, CHINA | Revenue: 2.65 Billion USD.
- SCC is Top 5 global PCB manufacturer.
- They owns and operates 4 world class manufacturing facilities in China and there are subsidiaries in North America and R&D sites in Europe.
- Focusing on quick-turn and volume production of technologically advanced PCBs (High Layer Count & Large Format, Flex, Rigid-Flex, HDI, ELIC)
- SCC Board product offering is utilized by all major End Markets including Networking/Telecom, Automotive, Computing, Medical & Industrial.

SCC.COM.CN

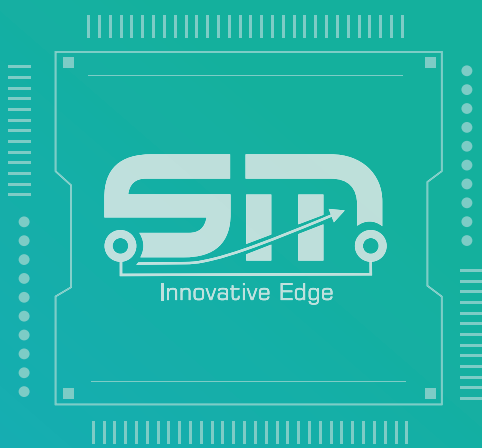


Mouser Electronics Is A Global Authorized Distributor Of Semiconductors And Electronic Components For Over 1,100 Industry-leading Manufacturer Brands. They Specialize In The Rapid Introduction Of The Newest Products And Technologies Targeting The Design Engineer And Buyer Communities. When You Need The Right Part Right Now, Think Mouser. Selection, Speed And Accuracy Are The Core Of Mouser's State-of-the-art Warehouse With Sophisticated Equipment Enabling Them To Process Orders. The Wireless Warehouse Management System Is Streamlined To Nearly Perfect Pick-and-ship Operations Delivering A 5-sigma Confidence Rating, Better Than 99%.

SM Electronic Technologies Pvt. Ltd Is An Authorized Channel Partner For Mouser Electronics In India. Our Extensive Product Offering Includes Semiconductors, Interconnects, Passives And Electromechanical Components.

- All Mouser Parts Are Supported In Indian Rupee (INR).
- No Customs Clearing Hassles And Handling Chargers.
- Free Shipping.
- Dedicated Customer Support And Quick Response.
- Dedicated And Specialized Logistic Support Team.





OUR NETWORK

INDIA



+91 80 66734567 | Fax : +91 80 66734545



sales@mysmindia.com



SM ELECTRONIC TECHNOLOGIES PVT. LTD.

#2, 8th Block, Nagarabhavi 2nd Stage, Malagala, Bengaluru - 560 072

SINGAPORE



+6333-8681 | Fax : +6333-8678



SMET SINGAPORE PTE .LTD.

230 Victoria Street, #15-01/08, Bugis Junction Towers, Singapore 188024

JAPAN



TEL : 03 - 3452 - 7171



str.info(at) satori.co.jp



SATORI ELECTRIC CO., LTD.

14-10, Shiba 1-chome, Minato-ku, Tokyo 105-0014, Japan

NEW DELHI



+91 011-61340441 | 61340442 | 61340443



895, 8th Floor, Vegas Business Tower,Vegas Mall, Dwarka Sector-14, New Delhi -110075

HYDERABAD



+91 40 2717 6676



H.no.1-3-37, 2nd floor, CP Chambers,Street no.5, Habsiguda, Beside Kapil Chits, Hyderabad – 500007 Telangana, India.

AHMEDABAD



+91 79 4890 4307



#202, Amarnath Business Center [ABC-11] Near St. Xaviers College Corner, Off CG Road, Navrangpura,

MUMBAI



+91 99203 01580 / +91 94492 73720



Office No -403, Swastik Disa Co-op Park,LBS Marg, Ghatkopar West, Opposite Helix [Shreyas Cinema], Mumbai -400 086

CHENNAI



+91-9884910577



Complex: Sri Motel High Way [Jain], 1st Floor, 89/3A1,Bangalore Trunk Road, Thirimizhisai, [Near Poonalmalee] Chennai – 600 124.

PUNE



+91-9970646858



Unit No. 903-B “Amar Business Zone” Tower “B”, S. No. 87/1A, Plot No. 1 &S. No. 87 (part), Sayakar Chowk, Baner Road, Baner, Pune - 411 045, BOARD – 020-67321111 DIR - 020-67321104



ALL REGISTERED TRADEMARKS ARE PROPERTIES OF RESPECTIVE COMPANIES