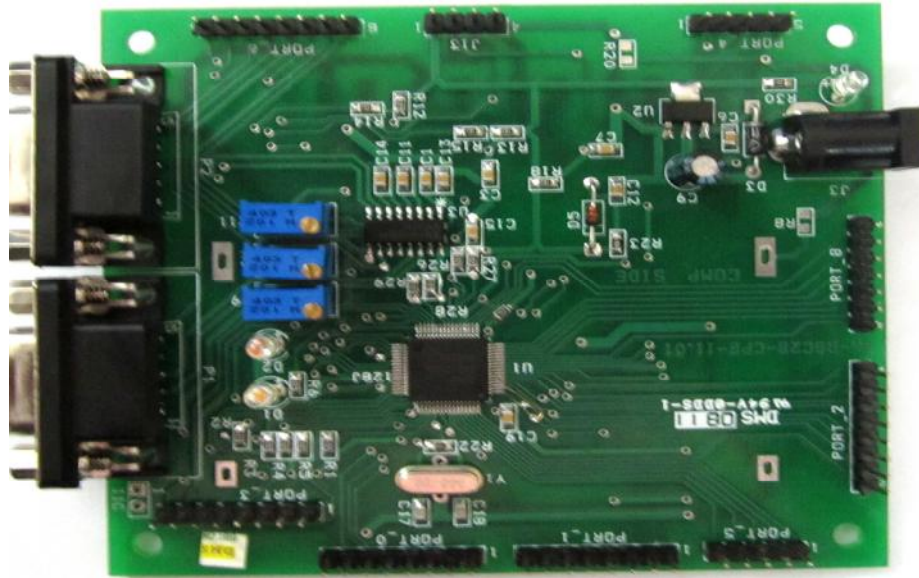
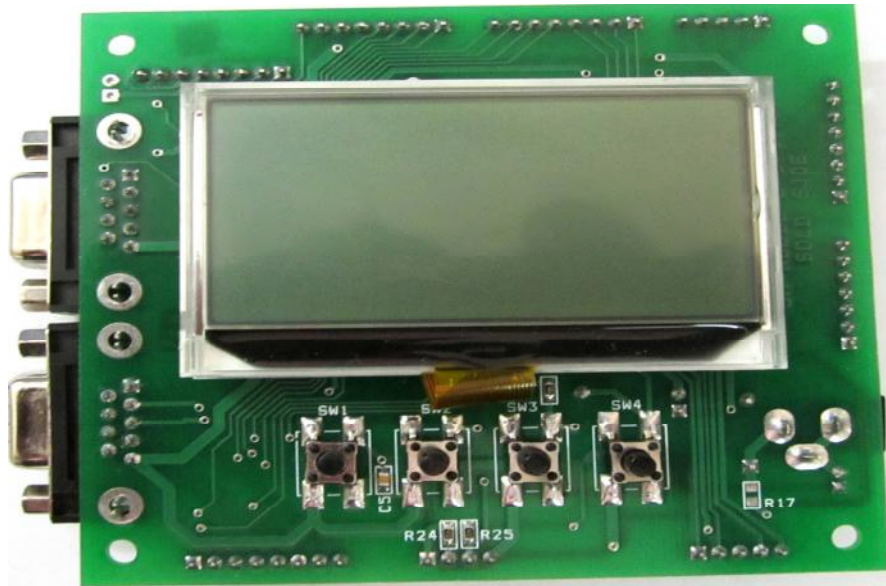


SM R8C2B General Purpose Board Quick Start (V1.0) Top view



Bottom view



REVISION HISTORY

Name	Date	Reason for changes	Version
SM R8C2B GPB	17/8/2011	First version released	1.0

Introduction

The Evaluation board for R8C2B is intended as a user friendly introductory for the R8C2B microcontroller. The board provides useful platform for evaluating tools for coding and debugging, using the High-Performance Embedded workshop as well as programming the device using E8a emulator.

The purpose of the board is to enable the user to evaluate the capabilities of the device and its peripherals for this all the I/O pins are pulled out.

Features supported on R8C2B General Purpose Board

❖ MCU part number R5F212B8SNFP

- Program ROM :64K bytes
- RAM Capacity: 3K bytes
- Package type: PLQP0064KB-A
- Number of Pins: 64

❖ Power Supply Section

- Input Voltage: Upto 12V
- Output Voltage: 3.3V
- Voltage Regulator: AP1117E50G-13-Fixed-TO2232

❖ Peripherals Details

- Serial port: Serial port used is UART1 & UART2.
- Clock: External crystal oscillator of 20 MHz.
- Key interrupts: Three Key Input Interrupts used i.e. K10, K11 & K12.
- A/D converter: Three A/D converter is used i.e. AN5, AN6 & AN7.
- IIC: SCL & SDA pins are pulled out.
- LED: Two Led are used & connected to p6_1 & p6_2.
- Input port: 14, Output port: 8, Input/output: 42

❖ Tianma Graphic Display

- The TM12864J1CCWGWAs of 128x64dot-matrix LCD, and a single-chip S7567 which incorporates LCD controller and common/segment driver. This module can be connected directly to microprocessor with 8 bit Parallel data interface. Built in a RAM with 65x132 bit capacity for storing the display data, so the unit can efficiently display the desired content under microprocessor control. Operating at a voltage of VDD=3.0V and Backlight drive current I=60mA & V=4.0V.