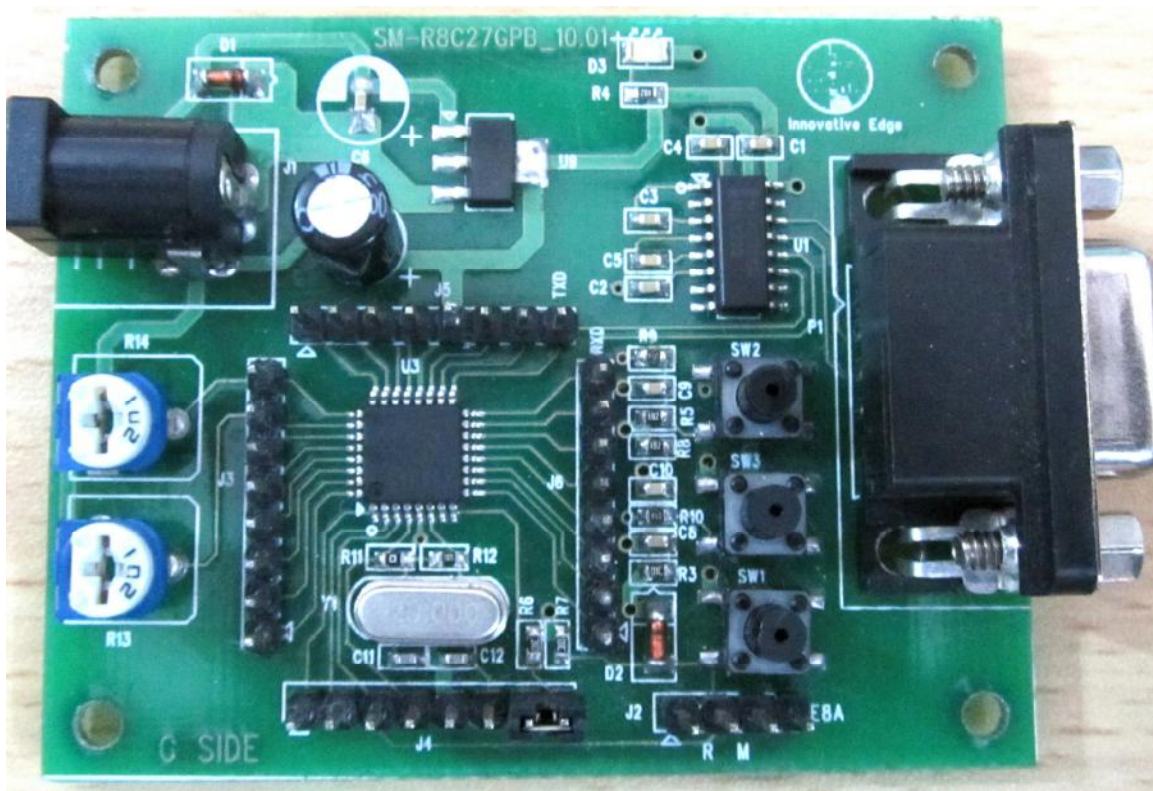


SM R8C27 General Purpose Board Quick Start (V1.0)



REVISION HISTORY

| Name | Date | Reason for changes | Version |
|--------------|-----------|------------------------|---------|
| SM R8C27 GPB | 17/8/2011 | First version released | 1.0 |
| | | | |

Introduction

The Evaluation board for R8C27 is intended as a user friendly introductory for the R8C27 microcontroller. The board provides useful platform for evaluating tools for coding and debugging, using the High-Performance Embedded workshop as well as programming the device using E8a emulator.

The purpose of the board is to enable the user to evaluate the capabilities of the device and its peripherals for this all the I/O pins are pulled out.

Functions and Specifications of SM-R8C27GPB

❖ MCU part number R5F21276DFP

- Program ROM :32K bytes
- RAM Capacity: 1.5K bytes
- Package type: PLQP0032GB-A
- Number of Pins: 32

❖ Power Supply Section

- Input Voltage: Upto 12V
- Output Voltage: 3.3V
- Voltage Regulator: AP1117E50G-13-Fixed-TO2232

❖ Peripherals Details

- SPI Serial port: Serial port used is UART0.
- Clock: External crystal oscillator of 20 MHz.
- Key interrupts: Two Key Input Interrupts used i.e. K10 & K12.
- A/D converter: Two A/D converter is used i.e. AN8 & AN10.
- IIC: SCL & SDA pins are pulled out.
- Input port: 14
- Output port: 6
- Input/output: 10