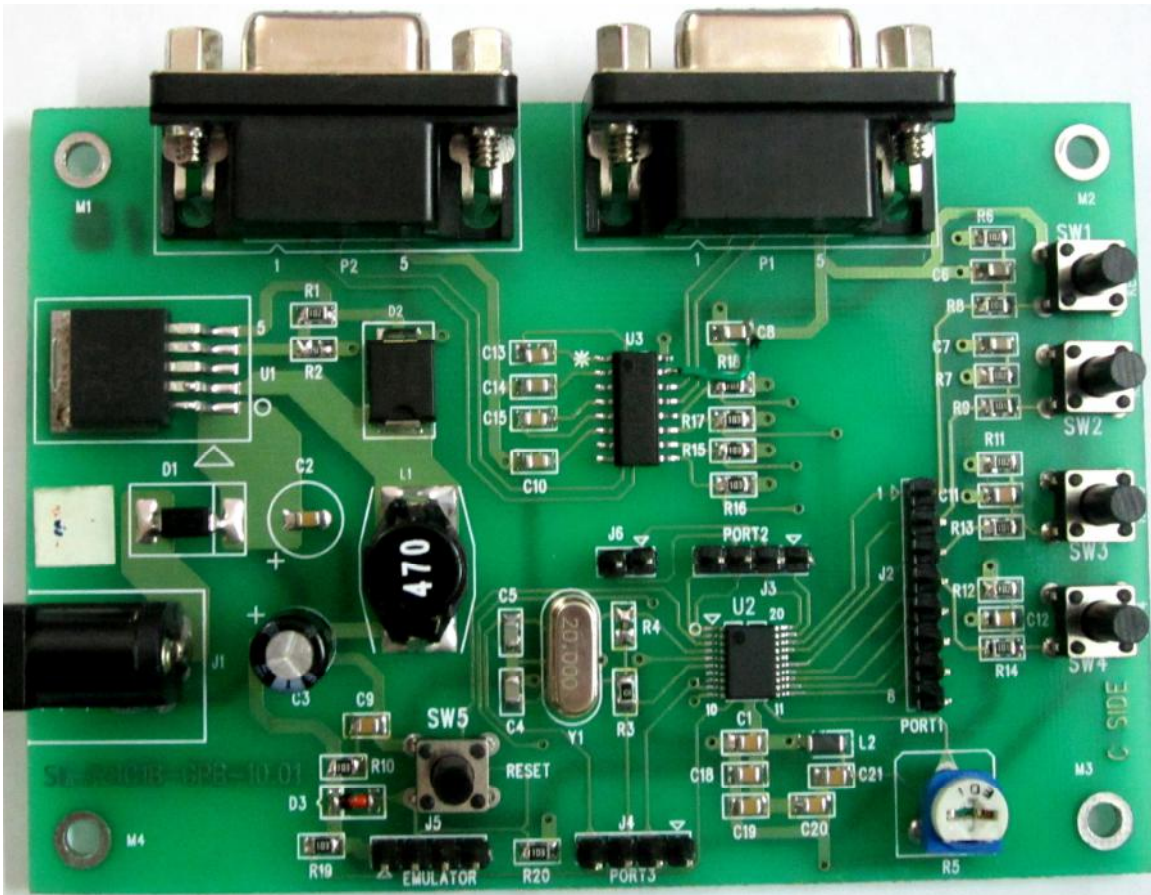


# SM R8C1B General Purpose Board Quick Start (V1.0)



## REVISION HISTORY

Name	Date	Reason for changes	Version
SM R8C1B GPB	17/8/2011	First version released	1.0

### Introduction

The Evaluation board for R8C1B is intended as a user friendly introductory for the R8C1B microcontroller. The board provides useful platform for evaluating tools for coding and debugging, using the High-Performance Embedded workshop as well as programming the device using E8a emulator.

The purpose of the board is to enable the user to evaluate the capabilities of the device and its peripherals for this all the I/O pins are pulled out.

### Functions and Specifications of SM-R8C1BGPB

#### ❖ MCU part number R5F211B2DSP

- Program ROM :8K bytes
- RAM Capacity: 512K bytes
- Package type: PLSP0020JB-A
- Number of Pins: 20

### ❖ Power Supply Section

- Input Voltage: Upto 12V
- Output Voltage: 3.3V
- Voltage Regulator: AP1501

### ❖ Peripherals Details

- SPI Serial port: Two Serial ports are used UART0 and UART1.
- Clock: External crystal oscillator of 20 MHz.
- Key interrupts: Four Key Input Interrupts used i.e. KI0, KI1, KI2 & KI3.
- A/D converter: One A/D converter is used.
- IIC Serial port: SCL & SDA pins are pulled out (J6).
- Input port: 12
- Output port: 5
- Input/output: 9