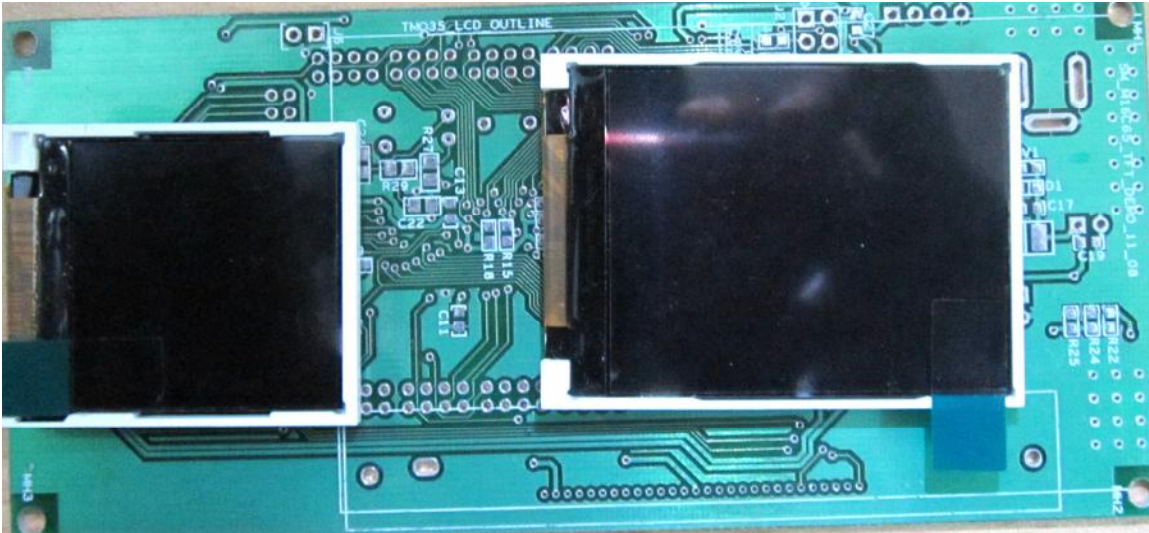
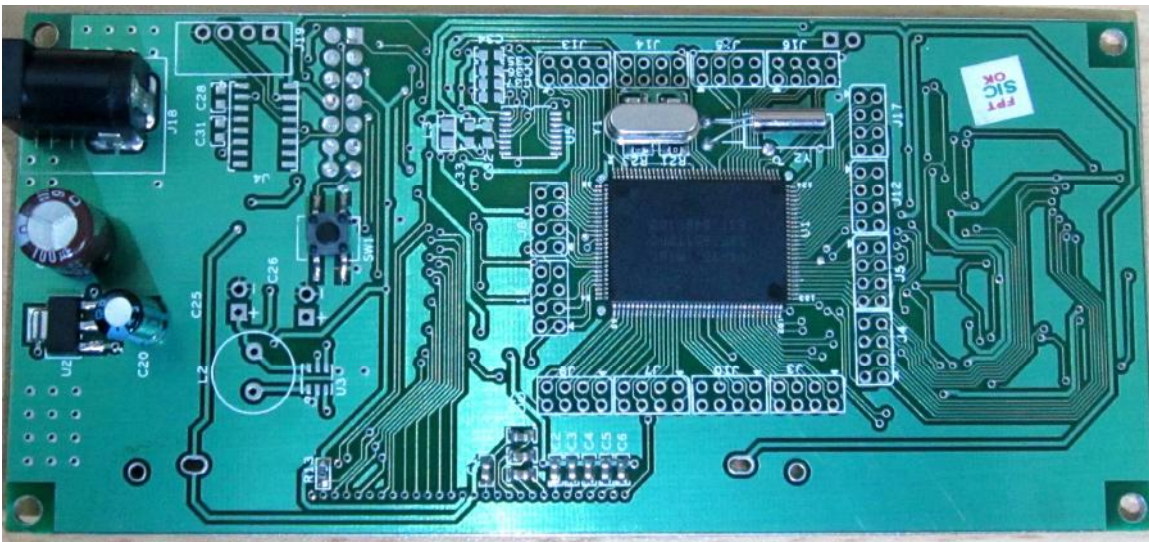


SM M16C65_TFT_TINY General Purpose Board Quick Start (V1.0)

TOP VIEW



BOTTOM VIEW



REVISION HISTORY

Name	Date	Reason for changes	Version
SM M16C65 GPB	17/8/2011	First version released	1.0

Introduction

The Evaluation board for M16C is intended as a user friendly introductory for the M16C65 16 bit microcontroller. The board provides useful platform for evaluating tools for coding and debugging, using the High-Performance Embedded workshop as well as programming the device using E8a emulator.

The purpose of the board is to enable the user to evaluate the capabilities of the device and its peripherals for this all the I/O pins are pulled out and special feature in this board is that all lower end TFT's like 1.4", 1.7", 2.0" and 3.5" are implemented.

Functions and Specifications of SM-M16C65-GPB

❖ MCU part number R5F3651TDFC

- Program ROM1 :768K bytes
- Program ROM2 :16K bytes
- DATA FLASH : 4KB*2 blocks
- RAM Capacity: 47K bytes

- Package type: PLQP0128KB-A
- Number of Pins: 128

❖ Power Supply Section

- Input Voltage: Upto 12V
- Output Voltage: 2.9V
- Voltage Regulator: LM7805

❖ Peripherals Details

- SPI Serial port: Two Serial ports are used UART0 and UART1.
- Clock: External crystal oscillator of 20 MHz
- Key interrupts: Two Key Input Interrupts used i.e. KI0 and KI1.
- Touch Panel IC : TPSC2007
- Input port: 55
- Output port: 38
- Input/output: 35