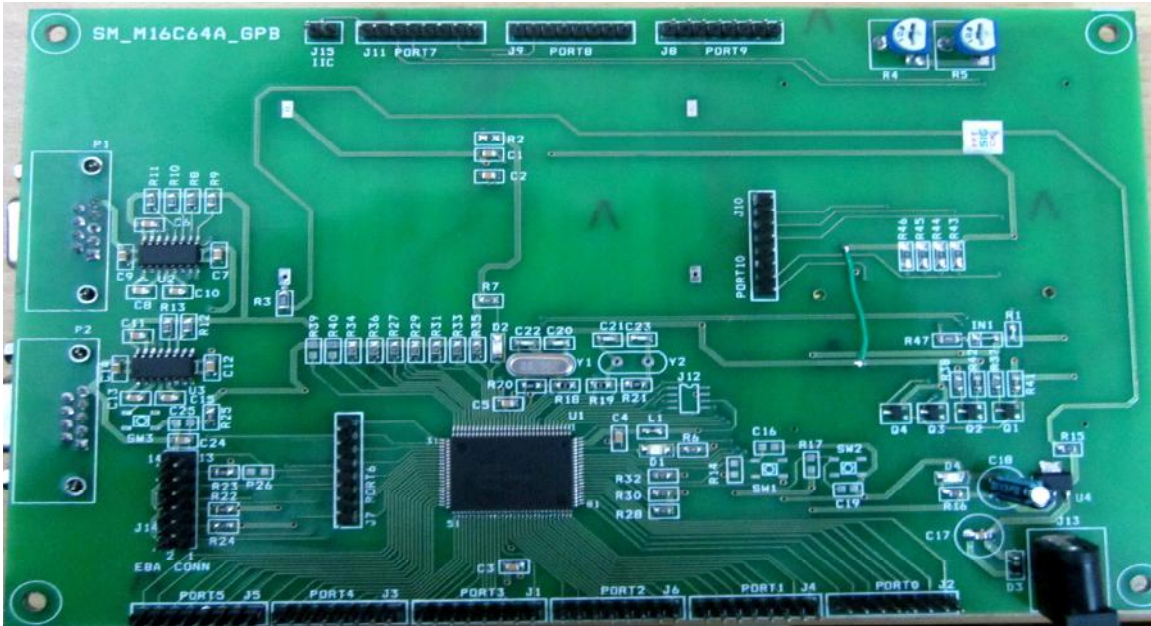
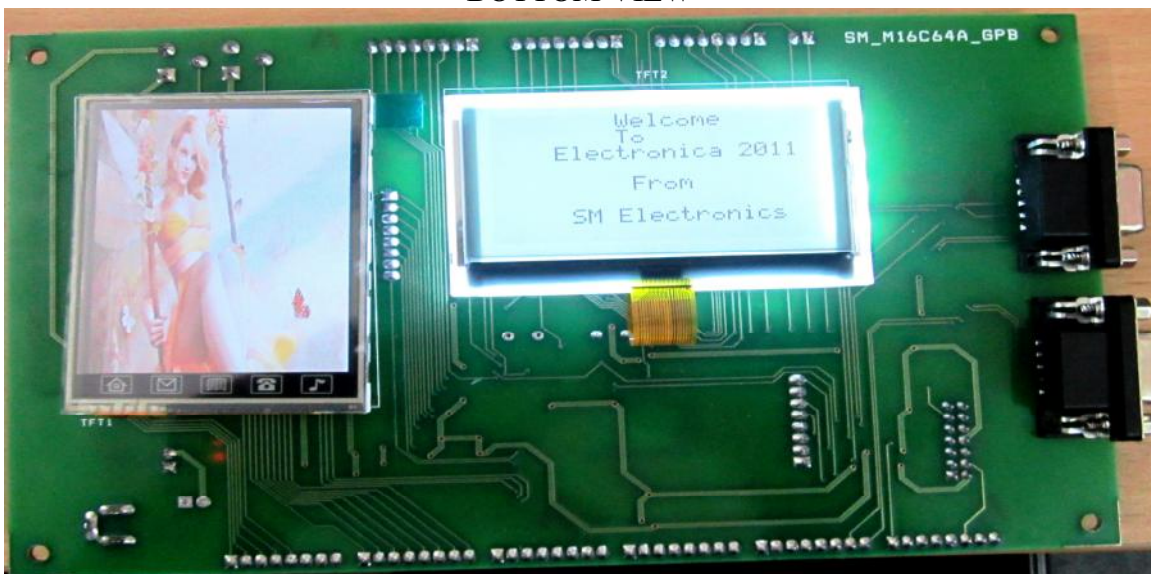


SM M16C64A General Purpose Board Quick Start (V1.0)

TOP VIEW



BOTTOM VIEW



Introduction

The Evaluation board for M16C64A is intended as a user friendly introductory for the M16C64A microcontroller. The board provides useful platform for evaluating tools for coding and debugging, using the High-Performance Embedded workshop as well as programming the device using E8a emulator.

The purpose of the board is to enable the user to evaluate the capabilities of the device and its peripherals for this all the I/O pins are pulled out.

Features supported on M16C64A General Purpose Board

❖ MCU part number R5F364AENFA

- Program ROM1 :256K bytes
- Program ROM2 :16K bytes
- DATA FLASH : 4KB*2 blocks
- RAM Capacity: 20K bytes
- Package type: PRQP0100JD-B
- Number of Pins: 100

❖ Power Supply Section

- Input Voltage: Upto 12V
- Output Voltage: 3.3V
- Voltage Regulator: LD1117-TO223

❖ Peripherals Details

- SPI Serial port: Two Serial ports are used UART0 and UART1.
- Clock: External crystal oscillator of 20 MHz
- Sub-Clock: External sub-clock crystal oscillator of 32.768Khz
- Key interrupts: Two Key Input Interrupts used i.e. KI0 and KI1.
- IIC Serial port: SCL & SDA pins are pulled out (J15).
- Input port: 29
- Output port: 19
- Input/output: 17

❖ Tianma Graphic Display

- The TM12864G1CCWGWAs of 128x64dot-matrix LCD, and a single-chip S7567 which incorporates LCD controller this module can be connected directly to microprocessor with 4-line serial data interface. Built in a RAM with 65x132 bit capacity for storing the display data, so the unit can efficiently display the desired content under microprocessor control. Operating at a voltage of VDD=3.0V and Backlight drive current I=60mA & V=4.0V.

❖ Tianma 2.8inch TFT Display

- TM028HBZ11 is a color active matrix LCD module incorporating amorphous silicon TFT (Thin Film Transistor). It is composed of a color TFT-LCD panel, driver IC, FPC, a back light unit and TP (Touch Panel). The 2.8" display area contains 240 x 320 pixels and can display up to 262K colors.