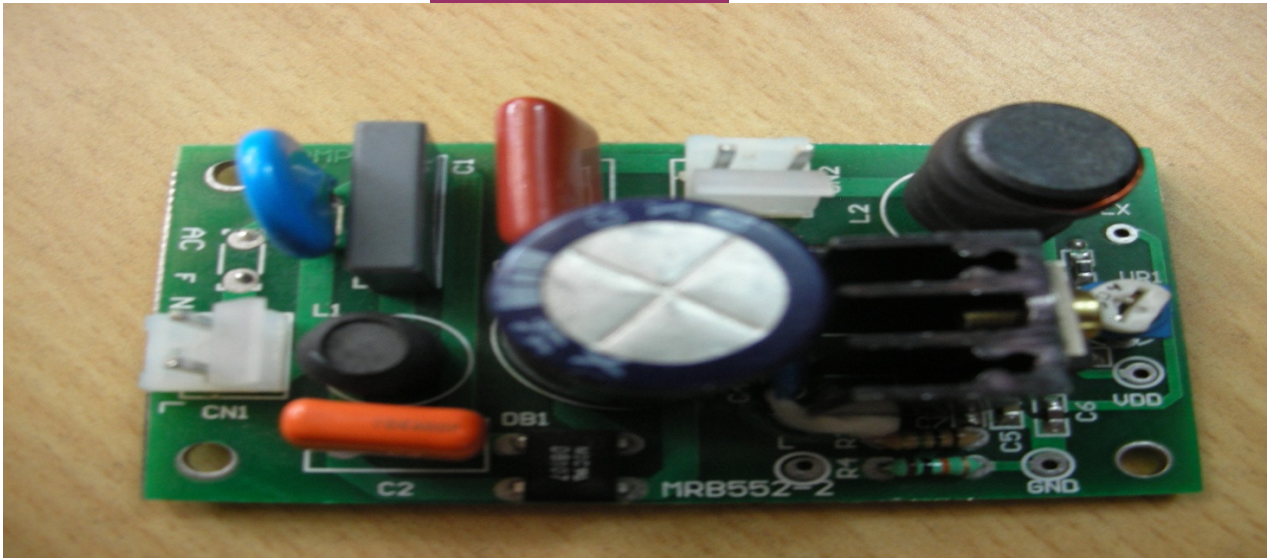
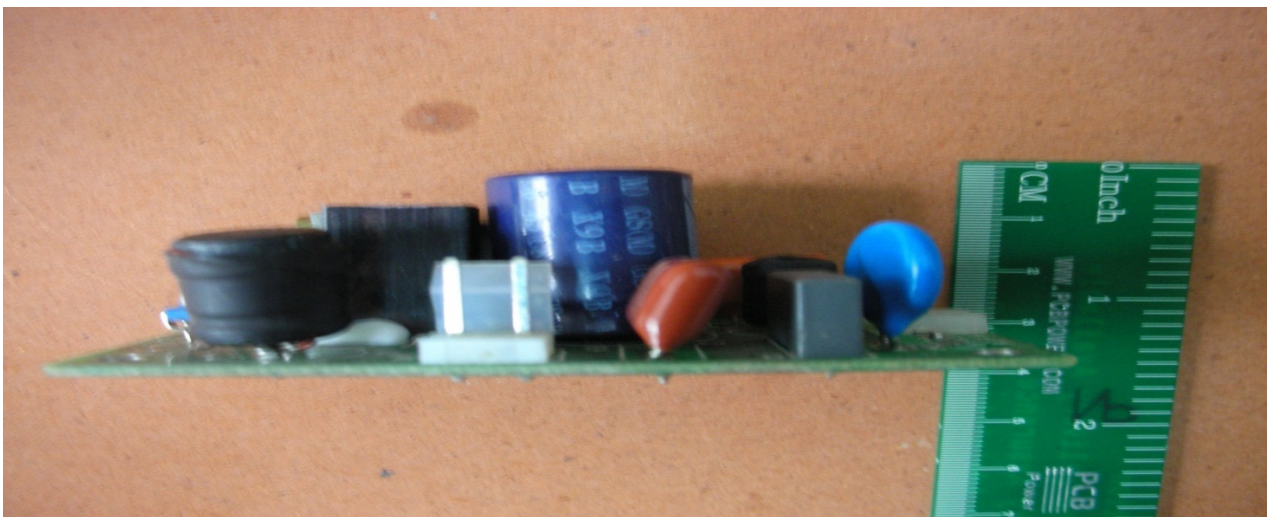


# **SM MIP 552 LED BULB BOARD (V1.0)**

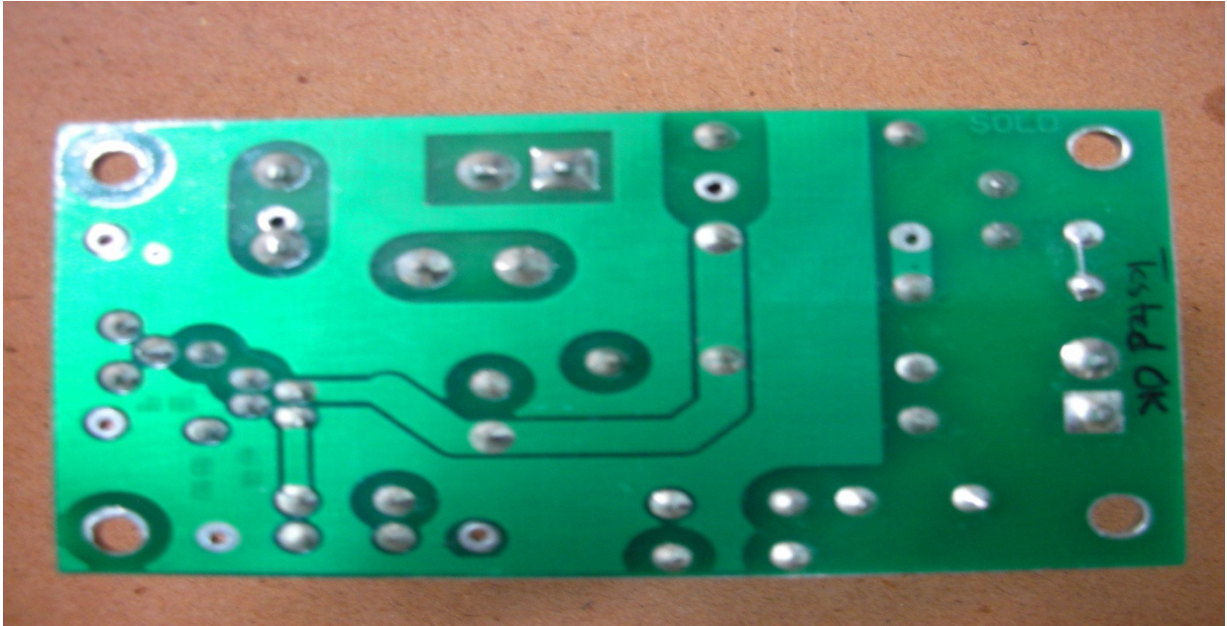
## **TOP VIEW**



## **SIDE VIEW**



**BOTTOM VIEW**



**REVISION HISTORY**

Name	Date	Reason for changes	Version
PANASONIC MIP552 LED BULB BOARD	26/8/2011	First version released	1.0

## INTRODUCTION

MIP551 is the best device for LED-lighting. LED-lighting using MIP551 has small size & high efficiency by simple design in worldwide input voltage (80 VAC to 280 VAC), and has dimmer control function by external signal.

### ❖ FEATURES

- Worldwide input voltage, 80 VAC to 280 VAC
- Typical LED peak current MIP552 : 1 A
- Peak current can be adjusted in two-stage correspond Voltage.
- Dimmer control function : EX-pin voltage range, 0v to 3v
- Function to set input voltage that can be driven L-pin voltage range
- Over temperature protection for IPD (Auto-restart)

### ❖ SPECIFICATIONS

Item	Package	Vdss	Fosc	Idpeak	Ron	Maximum output power (ta=25°C)
MIP5520 MDSLJ	TO-220 IPD7-A2	≥700V	44 kHz (typ.)	1.0A (typ.)	6Ω(typ.)	30W with heat sink (Io=0.70A, C3=220μF)

### ❖ POWER SUPPLY SECTION

- Input Voltage: 85-138VAC/187-264
- Output power: 30Watt

### ❖ APPLICATION

- LED-lighting
- HB-LED drive circuit