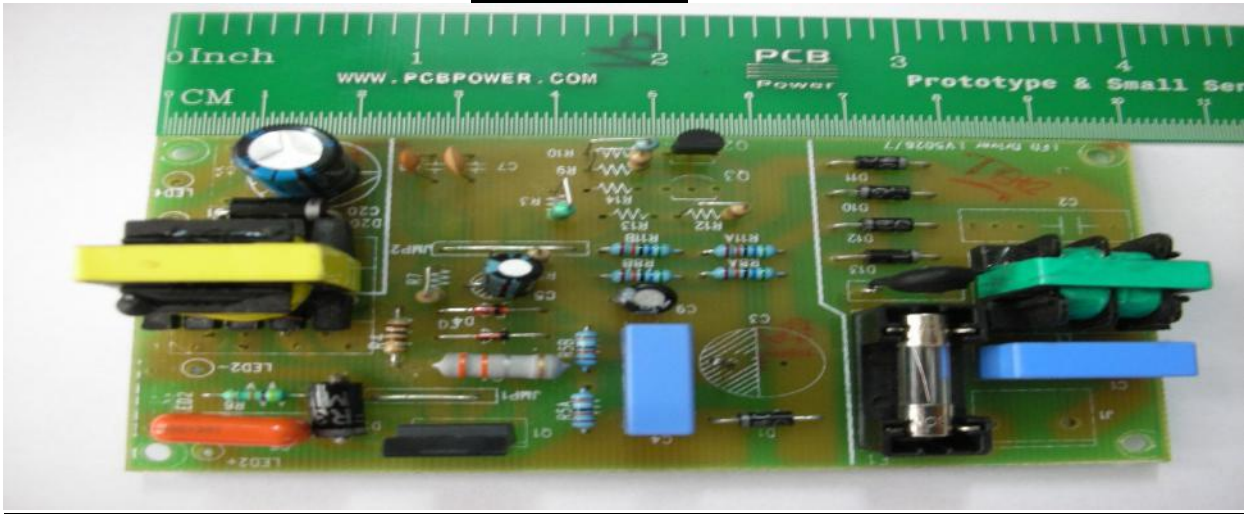
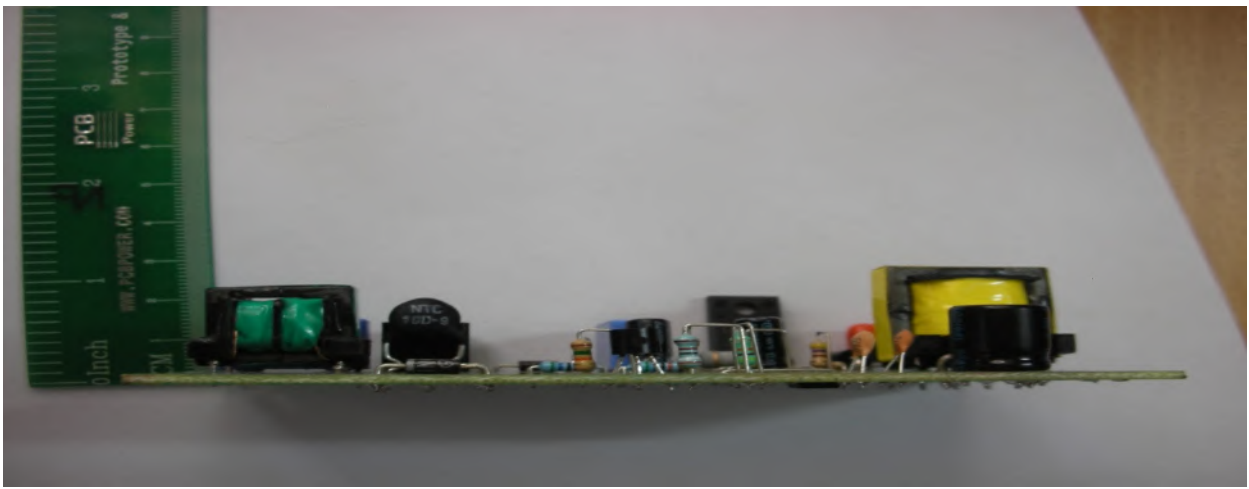


# SM LV5206 22 WATT LED LANTERN BOARD (V1.0)

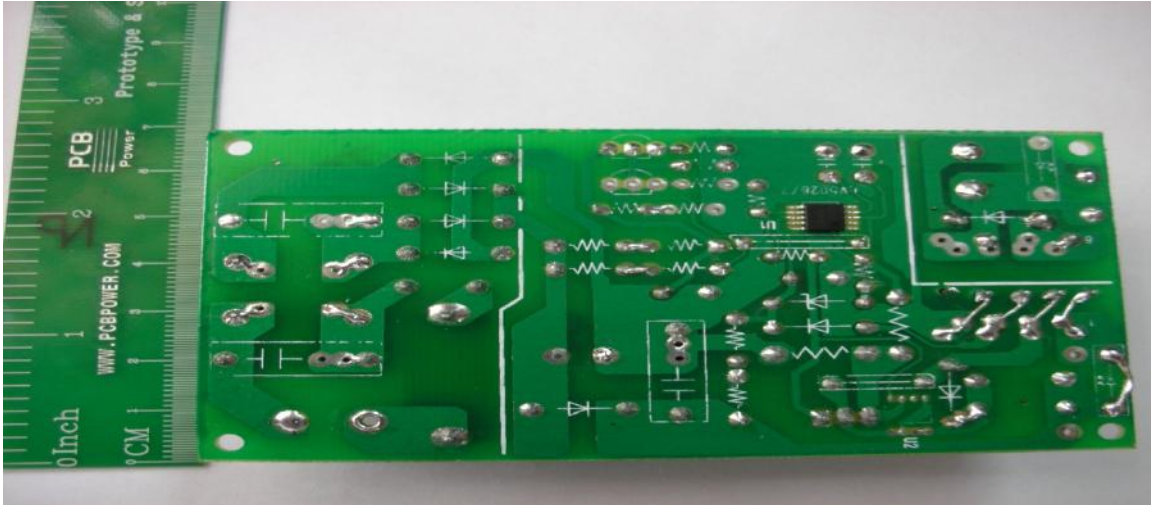
## TOP VIEW



## SIDE VIEW



**BOTTOM VIEW**



**REVISION HISTORY**

| Name                                 | Date      | Reason for changes     | Version |
|--------------------------------------|-----------|------------------------|---------|
| SANYO LV5206<br>18 WATT LED<br>BOARD | 27/8/2011 | First version released | 1.0     |
|                                      |           |                        |         |

**INTRODUCTION**

LV5206M is a High Voltage LED driver controller which drives LED current up to 3A external MOSFET. LV5206M is realized very simple LED circuit with a few external parts. It corresponds to various wide dimming controls including the TRIAC dimming control.

**❖ FEATURES**

- High voltage LED controller
- Various Dimming Control-TRIAC & Analog & PWM input
- Soft Start function

- Built in TRIAC stabilized function
- Over voltage function
- Selectable frequency 50kHz & 70kHz
- Short circuit protection

### ❖ SPECIFICATIONS

| Parameter                   | Symbol   | Rating     | Conditions            | Unit |
|-----------------------------|----------|------------|-----------------------|------|
| Maximum Input voltage       | VIN max  | -0.3 to 42 |                       | V    |
| CS pin                      |          | -0.3 to 7  |                       | V    |
| OUT pin                     | VOUT_abs | -0.3 to 42 |                       | V    |
| Allowable power dissipation | Pd max   | 1.0        | With specified board* | W    |
| Junction temperature        | Tjmax    | 150        |                       | °C   |
| Operating temperature       | Topr     | 30 to +125 |                       | °C   |
| Storage temperature         | Tstg     | 40 to +150 |                       | °C   |

### ❖ POWER SUPPLY SECTION

- Input Voltage: 85-138VAC/187-264
- Output power: depending on: External MOSFET rating

### ❖ APPLICATION

- General LED based indoor and outdoor lighting
- LED lanterns, Emergency lights
- White LED backlight for LCD panels
- Camping lights & Flashlights, LED lighting modules, LED Street light modules