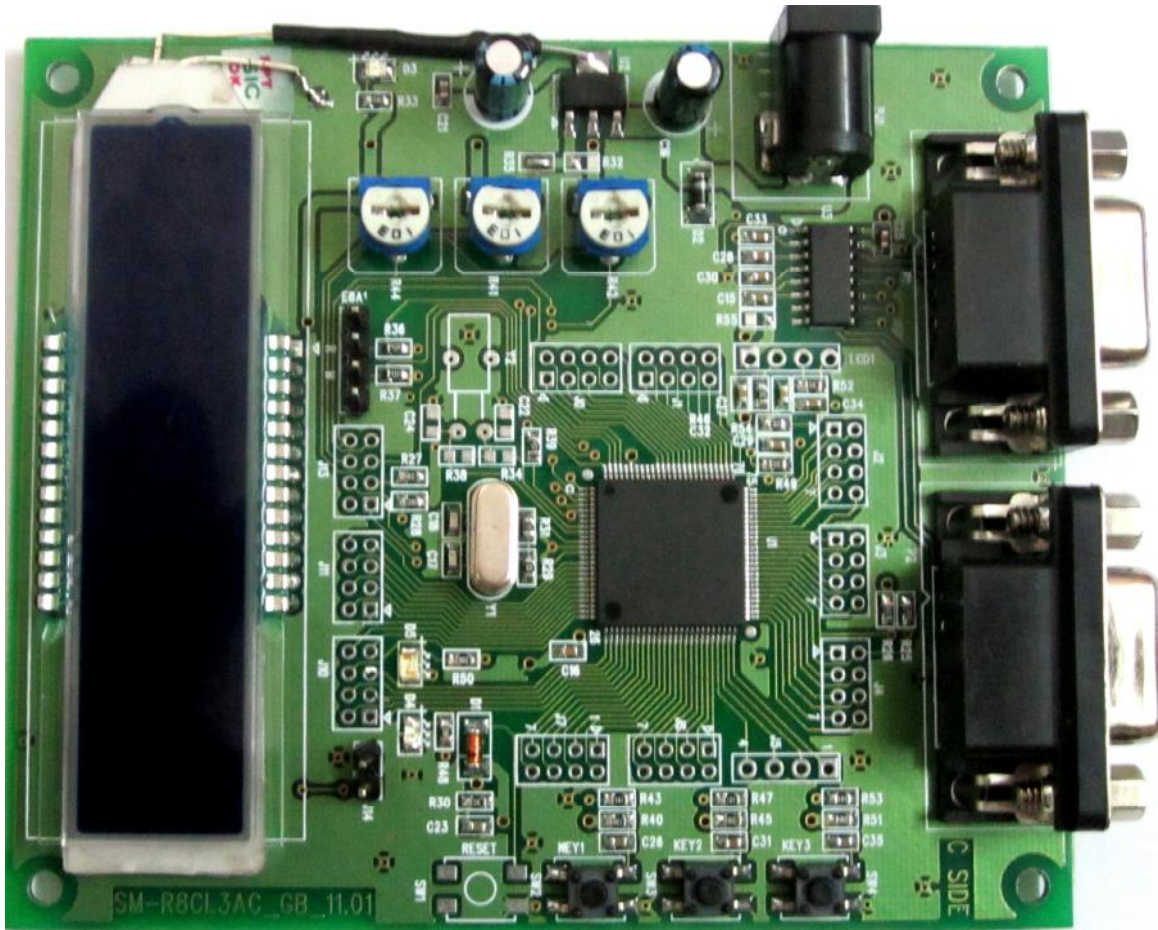


# SM R8CL3AC General Purpose Board Quick Start (V1.0)



## REVISION HISTORY

Name	Date	Reason for changes	Version
SM R8CL3AC GPB	17/8/2011	First version released	1.0

### Introduction

The Evaluation board for R8CL3AC is intended as a user friendly introductory for the R8CL3AC microcontroller. The board provides useful platform for evaluating tools for coding and debugging, using the High-Performance Embedded workshop as well as programming the device using E8a emulator.

The purpose of the board is to enable the user to evaluate the capabilities of the device and its peripherals for this all the I/O pins are pulled out and inbuilt LCD driver control circuit with 4 power supply pins (VL1 to VL4) upto 416 pixels of an LCD display can be controlled.

### Features supported on R8CL3AC General Purpose Board

- ❖ MCU part number R5F21258SNFP
  - Program ROM :64K bytes
  - RAM Capacity: 3K bytes

- Package type: PLQP0052JA-A
- Number of Pins: 100

#### ❖ Power Supply Section

- Input Voltage: Upto 9V
- Output Voltage:5.0V
- Voltage Regulator:AP1117

#### ❖ Peripherals Details

- SPI Serial port: Two Serial ports are used UART0 and UART1.
- IIC Serial port: SCL & SDA pins are pulled out (J2).
- Key Input Interrupt: Three Key Input Interrupt is used i.e. K15, K16 and K17.
- A/D Converter: Three A/D converters are used AN16, AN17& AN18.
- Clock: External Crystal Oscillator 20MHz & Sub Clock of 32MHz.
- Input port : 13
- Output port:6
- Input/Output:33

#### ❖ Tianma Segment Display

- Seven Segment display with 4 COM & 26pins with an Operating voltage of 3.6V.